



<b>Client:</b>	Orvanta Labs
<b>Accession #:</b>	2605190257
<b>Search Code:</b>	Orva2605190257
<b>Received:</b>	05/19/2026
<b>Reported:</b>	05/20/2026
<b>Lot:</b>	NA26-05

## Sample Summary

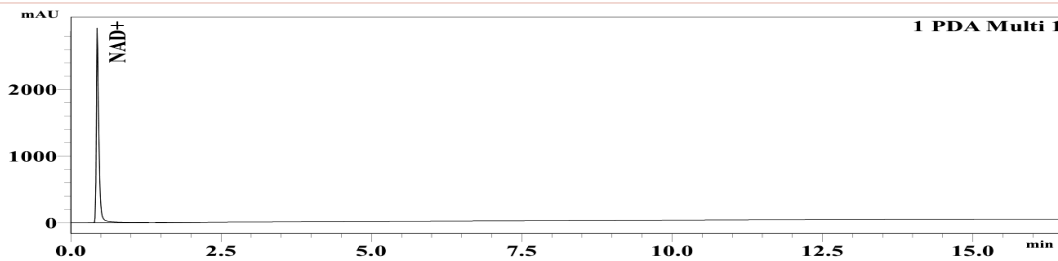
<b>Product:</b>	NAD 500mg	<b>Purity:</b>	99.70%
<b>Identity:</b>	Confirmed	<b>Net Content:</b>	512.42 mg
<b>Appearance:</b>	White Lyophilized Powder		

## Analytical Results

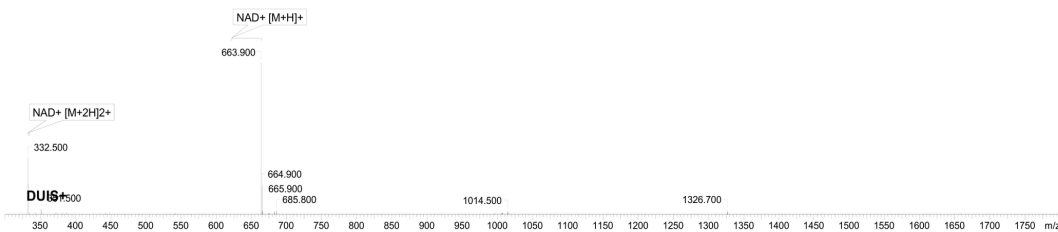
Test	Result
Identity (LC-MS)	NAD+
Purity (HPLC-UV)	99.70%
Net Content	512.42 mg

Method: HPLC with UV detection coupled with mass spectrometry (LC-MS).

### Chromatogram



### Mass Confirmation



*Alex Johnson*

Principal Chemist

FreedomDiagnosticsTesting.com

Admin@FreedomDiagnostics.net

Proudly Owned and Operated in the USA



The peptide purity analysis reported here was conducted using LCMS/MS under standard laboratory conditions. This analysis is intended for informational purposes only and is specific to the sample(s) provided. The peptides tested are intended for research use only and are not approved for human or veterinary use, diagnostic, therapeutic, or clinical applications. Results should be interpreted by qualified professionals within the scope of the intended research. The accuracy and reliability of the test may be influenced by sample integrity, handling, and other experimental variables.



**Client:** Orvanta Labs  
**Accession #:** 2605190258  
**Search Code:** Orva2605190258  
**Received:** 05/19/2026  
**Reported:** 05/20/2026  
**Lot:** NA26-05

### Sample Summary

<b>Product:</b>	NAD 500mg	<b>Endotoxin Threshold:</b>	
<b>Appearance:</b>	White Lyophilized Powder	<b>Pass</b>	

### Analytical Results

Test	Result	
<i>Method:</i> Endotoxin testing performed using Limulus Amebocyte Lysate assay in accordance with USP <85> under validated laboratory conditions.		
<b>Endotoxin Replicate 1:</b>	Pass	Assay Sensitivity: ≤0.05 EU/mL
<b>Endotoxin Replicate 2:</b>	Pass	Assay Sensitivity: ≤0.05 EU/mL

### Notes/Comments

N/A



Principal Chemist

FreedomDiagnosticsTesting.com

Admin@FreedomDiagnostics.net

**Proudly Owned and Operated in the USA**



The endotoxin analysis reported here was performed using the Limulus Amebocyte Lysate (LAL) assay in accordance with USP <85> under validated laboratory conditions. This analysis is intended for informational purposes only and is specific to the sample(s) provided. The materials tested are intended for research use only and are not approved for human or veterinary use, diagnostic, therapeutic, or clinical applications. Results should be interpreted by qualified professionals within the scope of the intended research. The accuracy and reliability of the test may be influenced by sample integrity, handling, and other experimental variables.